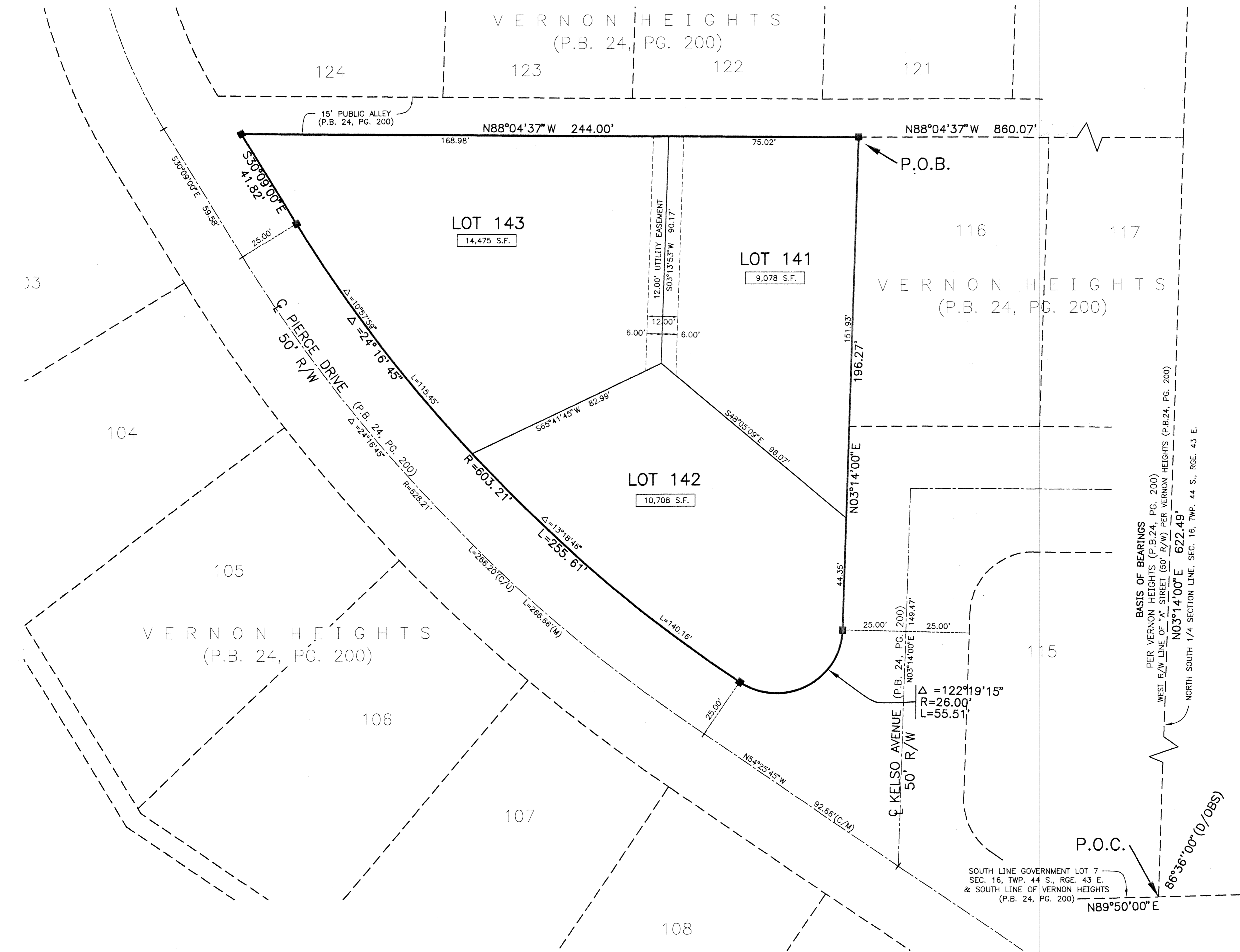
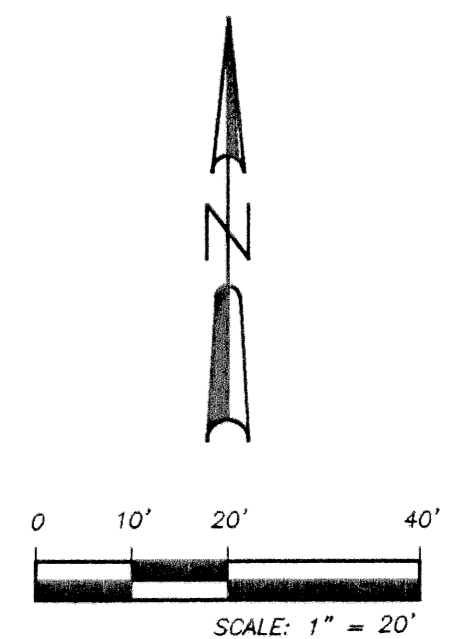


# VERNON HEIGHTS ONE

situate in Section 16, Township 44 South, Range 43 East  
 City of Lake Worth, Palm Beach County, Florida.  
 February, 2003 Sheet 2 of 2

STATE OF FLORIDA  
 COUNTY OF PALM BEACH  
 This plat was filed for  
 record at \_\_\_\_\_, this  
 day of \_\_\_\_\_, 2003,  
 and duly recorded in  
 Plat Book No. \_\_\_\_\_ on  
 Pages \_\_\_\_\_ through \_\_\_\_\_  
 DOROTHY H. WILKEN  
 Clerk Circuit Court

By:



- ABBREVIATION LEGEND
- D.E. DRAINAGE EASEMENT
  - U.E. UTILITY EASEMENT
  - P.B. PLAT BOOK
  - O.R.B. OFFICIAL RECORD BOOK
  - P.C. POINT OF CURVATURE
  - P.T. POINT OF TANGENCY
  - P.O.C. POINT OF COMMENCEMENT
  - P.O.B. POINT OF BEGINNING
  - P.C.P. PERMANENT CONTROL POINT
  - P.R.M. PERMANENT REFERENCE MONUMENT
  - R/W RIGHT-OF-WAY
  - REF. REFERENCE
  - SEC. SECTION
  - TWP. TOWNSHIP
  - RAD. RADIAL
  - RGE. RANGE
  - P.L.S. PROFESSIONAL LAND SURVEYOR
  - L.B. LICENSED BUSINESS
  - TYP. TYPICAL
  - N.R. NON-RADIAL

BASIS OF BEARINGS  
 PER VERNON HEIGHTS (P.B. 24, PG. 200)  
 WEST R/W LINE OF "A" STREET (50' R/W) PER VERNON HEIGHTS (P.B. 24, PG. 200)  
 NORTH SOUTH 1/4 SECTION LINE, SEC. 16, TWP. 44 S., RGE. 43 E.

SOUTH LINE GOVERNMENT LOT 7  
 SEC. 16, TWP. 44 S., RGE. 43 E.  
 & SOUTH LINE OF VERNON HEIGHTS  
 (P.B. 24, PG. 200)

<b>LMA</b>		<b>LAND MATTERS ASSOCIATES</b>	
Professional Land Surveyors - Development Consultants (L.B. NO. 7031) 4201 Westgate Ave Ste A2, West Palm Beach, Florida, 33409 (561)296-1550			
<b>VERNON HEIGHTS PLAT ONE</b>			
SITUATE IN SECTION 16, TOWNSHIP 44 SOUTH, RANGE 43 EAST LAKE WORTH, FLORIDA			
Drawn by: R. Hagler	Date: 11-01-02	SCALE: AS SHOWN	JOB NUMBER: SHEET OF 01-020-1 2 2
Checked by: R. Hagler	Dwg File: 01-020PL		